

ONE CENTRAL PARK HELIOSTATS & REFLECTORS

FRASERS PROPERTY /
PTW ARCHITECTS

Central Park occupies 5.8 hectares of the Sydney city fringe in Chippendale. Central Park is the visionary redevelopment of the old Carlton & United Brewery site, bordered by Broadway and Abercrombie Streets. Frasers Property aims to develop Australia's greenest mixed use urban precinct. Plans include the protection of heritage buildings, new parklands and community facilities and substantial upgrades to urban infrastructure. The expansive site allows for the development of approximately 235,000 sqm of residential, commercial and retail space.

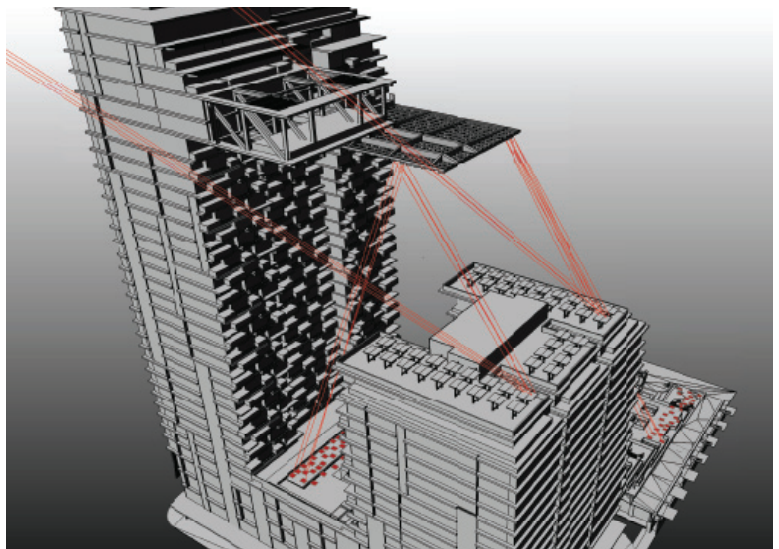
A World First Installation

The first residential stage of Central Park called 'One Central Park' was designed by French architect Jean Nouvel. It comprises two towers of 16 and 33 storeys, above a 5 level retail and recreation podium. The eastern tower features a passive solar design (a heliostat installation) extending from the upper levels on a monumental cantilever. The heliostat incorporates an innovative system of fixed and motorized mirrored panels designed to capture sunlight and redirect it into the retail atrium and onto the landscaped terraces. At night the heliostat's integrated lighting display, designed by renowned lighting artist Yann Kersale, will theatrically and colourfully present video interpretations of Sydney landscapes.

Kennovations is engaged by Frasers Property to provide technical feasibility, conceptual and detailed design and engineering for the 42 x 6.2 sqm Sun Tracking Heliostats (on the rooftop), the 320 x 1.5 sqm Reflector Panels (suspended beneath the main cantilever) each with 9 LED clusters within the surface, lighting plan development and risk minimisation strategies.

Outcome

Construction of One Central Park is underway and is now selling off the plan. Central Park Display Pavilion is located at 80 Broadway, Chippendale, open daily 10am to 6pm and features a Reflector Panel display designed and built by Kennovations. Installation of the Heliostats and Reflectors is scheduled from August to October 2012.



SYDNEY 15 Waltham Street, Artarmon NSW 2064 Australia
P 02 9966 8867 F 02 9439 9815 E sydney@kennovations.com.au

MELBOURNE 17 Redwood Drive, Notting Hill VIC 3168 Australia
P 03 9540 0844 F 03 9543 2286 E melbourne@kennovations.com.au

www.kennovations.com.au

FRASERS PROPERTY

PTW

Positive approach. Innovative solutions.